

**1009/225 Pacific Highway North Sydney NSW**

2  2  1 

This stylish Two Bedroom apartment located in Lucent. Lucent is North Sydney's new, unique setting for luxurious residential living. With lavish resort-style facilities and a lush rooftop garden, opulent interiors and finishes.

**Price** : \$ 1,250,000

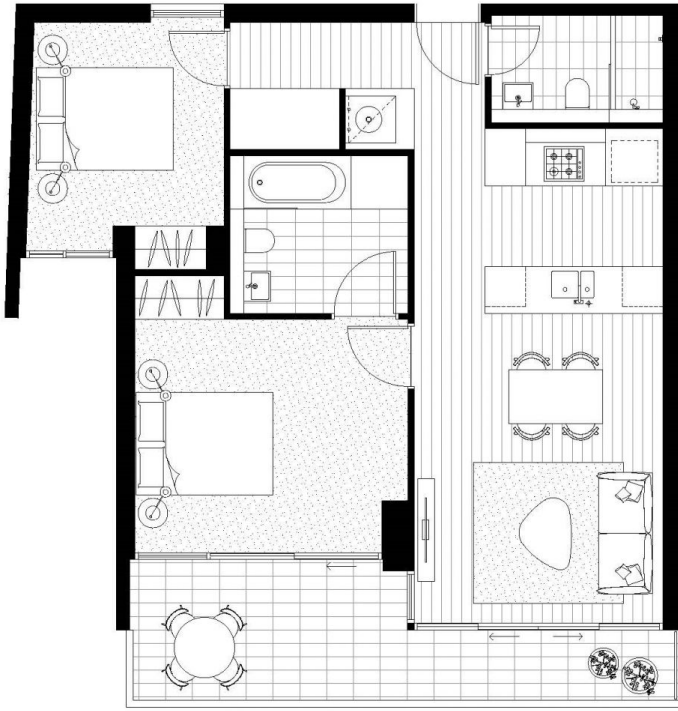
**View** : <https://www.linfieldgroup.com.au/sale/nsw/north-shore-lower/north-sydney/residential/apartment/6199643>

**Features:**

- The finishes balance lightness and luminosity with warmth and comfort, including metallic paint, timber and stone, linear details and clever light placement.
- Resort-Style facilities: infinity pool overlooking Sydney Harbour, stunning rooftop garden, gym, multi-purpose room and outdoor BBQ area
- Just minutes walk to North Sydney train station and amenities



**Zefeng (wallace) Zhang**  
02 8036 6999



Disclaimer: The particulars are set out as a general outline for the guidance of intending purchasers and do not constitute an offer or contract. All descriptions, dimensions, references to conditions and necessary particulars for use and other details are given in good faith and are believed to be correct, but any intending purchaser should not rely on them as statements or representations of fact, but must verify themselves by inspection or otherwise to the correctness of each item, and where necessary seek advice. The third party supplier or their agent has any liability to make any representation or warranty in relation to this property.

# LUCENT

NORTH SYDNEY

UNIT NUMBER  
1009



TWO BEDROOM  
APARTMENT

Internal Area 71m<sup>2</sup>  
External Area 13m<sup>2</sup>  
Total Area 84m<sup>2</sup>

