

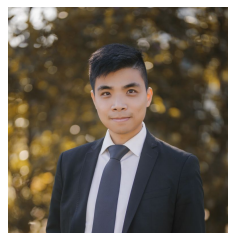
701/15 Chatham Road West Ryde NSW

3  2  2 

Developer: Toga and Folkestone
Strata: Bright & Duggan
Selling Agent: Zijong Zhang (Spencer) 0490 331 844 &
Zefeng Zhang (Wallace) 0424 650 775
Agent Office: Linfield Property Agents | 2 Rider Blvd,
Rhodes

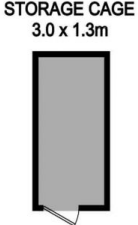
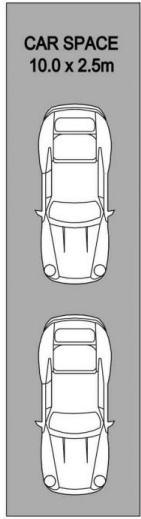
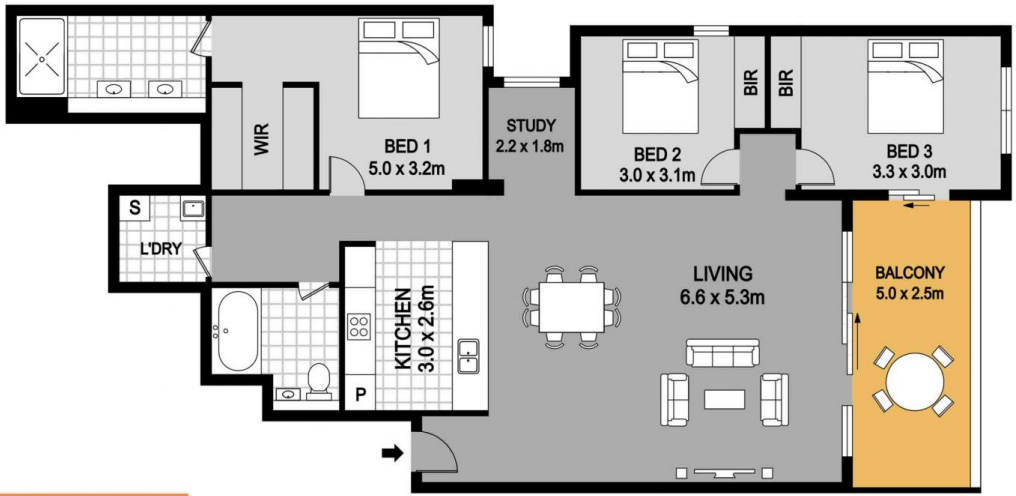
View : <https://www.linfieldgroup.com.au/sale/nsw/northern-suburbs/west-ryde/residential/apartment/6199728>

Linfield Property Agents are proud to present you this spacious North-East facing 3 bedrooms apartment well located in Central Square developed by Toga and Folkestone, ideal for both owner-occupiers and Investors.



Zefeng (wallace) Zhang
02 8036 6999

Location:
-Right above Coles supermarket with easy access to Market Place including Woolworth, BWS, major bank branches, chemist and so much more



APPROXIMATE AREAS	
Internal	111.8 sqm
Balcony	12.5 sqm
Car space	25.0 sqm
Storage cage	3.9 sqm

701/15 CHATHAM ROAD, WEST RYDE



DISCLAIMER

PLANS SHOWN ARE FOR MARKETING PURPOSES ONLY, ALL DIMENSIONS ARE APPROXIMATE AND NOT TO SCALE. THEY ARE SUBJECT TO ERRORS AND INACCURACIES AND NO LIABILITY WILL BE ACCEPTED. INTERESTED PARTIES SHOULD MAKE THEIR OWN INQUIRES.