



815/225 Pacific Highway North Sydney NSW

1  1  1 

Linfield loves this building: Lucent has recently been completed by Greenland, with award winning team, Developer well-know Greenland Australia, Builder Richard Crookes Constructions, Architecture Turner and Landscaping Turf Design Studio.

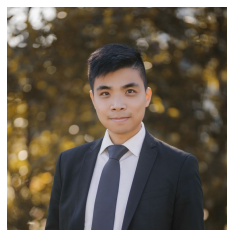
Lucent comprises of 211 apartments with 7 retails, and 3 lifts access, and on-site building management services, well located at heart of North Sydney. The resort-style facilities make life at Lucent an enviable dream come true. You will love the infinity pool overlooking Sydney's glittering harbour and panoramic views on the rooftop, child-friendly splash pool, outdoor BBQ area and fully equipped gym with own deck on level 19.

Linfield loves those features :

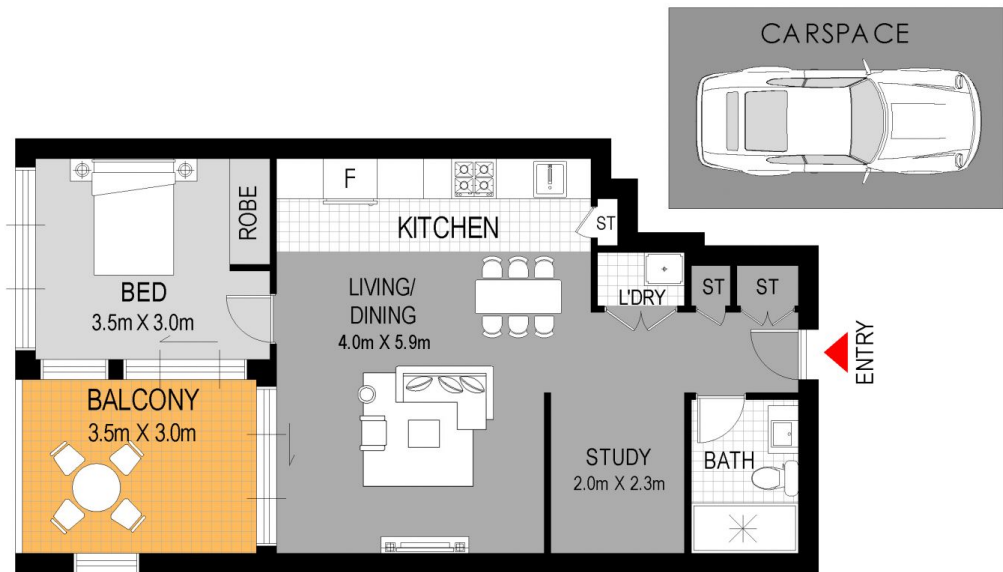
- Level 8, East Facing

Price : \$ 975,000

View : <https://www.linfieldgroup.com.au/sale/nsw/north-shore-lower/north-sydney/residential/apartment/6199922>



Zefeng (wallace) Zhang
02 8036 6999



APPROXIMATE AREAS	
Internal	52 sqm
Balcony	9 sqm
Total	61 sqm

FLOOR PLAN



North Sydney
815/225 Pacific Highway.

WARNING: DISCLAIMER This information is not to be relied upon. It is strictly used for marketing and illustration purposes only. All measurements are approximate. Not to scale. No liability accepted. You must rely on your own inquiries and seek advice from your solicitor. Floor plan by cnkplan@cnkplan.com.au/ www.cnkplan.com.au