



Level 1/118/4 Seven Street Epping NSW

2  2  1 

SOLD by Shan Lin

Linfield Property Agents are proud to present this light-filled 2 bedroom apartment at Epping Park Complex.

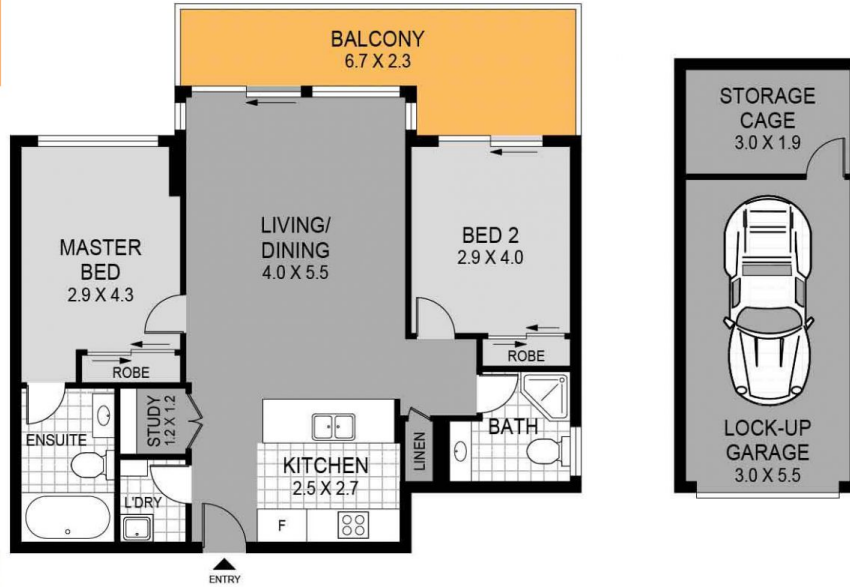
Property Features:

Light-filled living room with sliding doors access to entertaining balcony
Full size kitchen with stone benchtop and breakfast bar
Two good size bedrooms with built-in wardrobe
North east aspect with great privacy
Air conditioning, seperate laundry, lift access
School catchment Epping West Public, Cheltenham Girls and Marsden High School
Well equipped complex including gym, swimming pool, tennis court, bqq area and playground
One lock up garage

View : <https://www.linfieldgroup.com.au/sale/nsw/northern-suburbs/epping/residential/apartment/6199927>



Shan Lin
02 8036 6999



APPROXIMATE AREAS	
Internal Incl Balcony	84sqm
Garage Incl Storage	23sqm
Total	107sqm
APPROXIMATE OUTGOINGS	
Council Rates	\$183.70 pq
Water Rates	\$ 183.24 pq
Strata Rates	\$1245.70 pq



Epping
118/4 Seven St.

DISCLAIMER: This Information Is Not To Be Relied Upon. It Is Strictly Used For Marketing And Illustration Purposes Only. All Measurements Are Approximate. Not To Scale. No Liability Accepted. You Must Rely On Your Own Inquiries And Seek Advice From Your Solicitor.