






Level Ground/7/2 Underdale Lane Meadowbank NSW

2  2  1 

Linfield Property Agents are proud to present this 2 bedroom + study dual Level townhouse style apartment at Meadowbank.

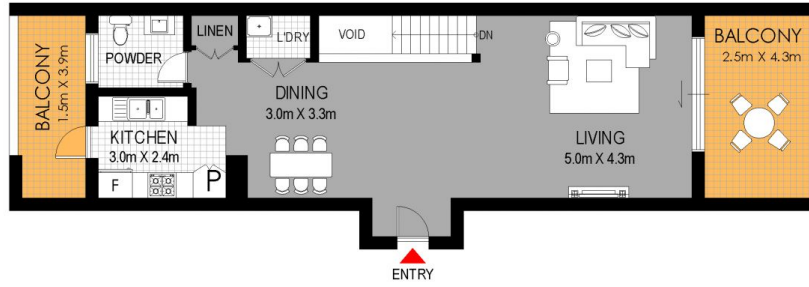
Features:

- Configured with outdoor flow to four separate alfresco areas
- Open plan living and dining areas present neutral decor
- Living zones flow to both front and rear elevated balconies
- Ground level accommodation extends to two private courtyards
- CaesarStone kitchen with stainless steel gas appliances
- Two bedrooms with built-in wardrobes, master with full ensuite
- Second bedroom with flexible adjoining office or nursery

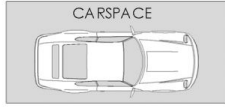
Price : \$ 772,500
View : <https://www.linfieldgroup.com.au/sale/nsw/northern-suburbs/meadowbank/residential/apartment/6199986>



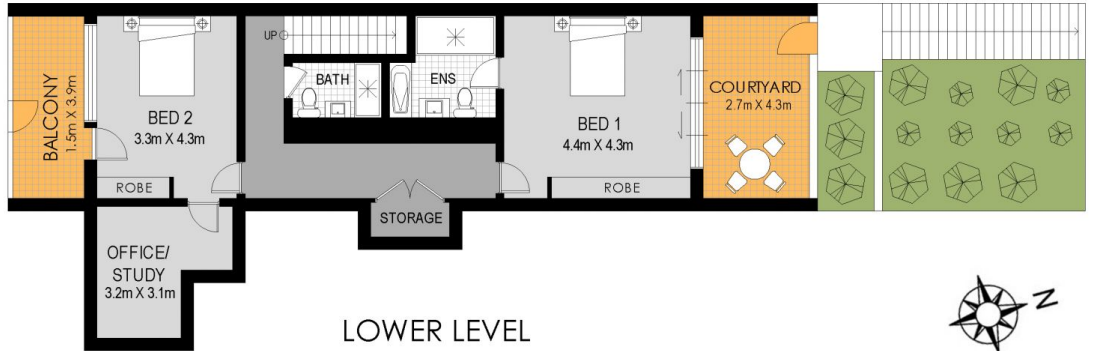
Shan Lin
02 8036 6999



UPPER LEVEL



STORAGE
2.0m X 1.3m



LOWER LEVEL



APPROXIMATE AREAS	
Internal	112 sqm
External	34 sqm
Total	146 sqm
APPROXIMATE OUTGOING	
Strata	\$1400-\$1500 pq
Council	\$302 pq
Water	\$178 pq

Meadowbank
7/2 Underdale Lane.

WARNING: DISCLAIMER This information is not to be relied upon. It is strictly used for marketing and illustration purposes only. All measurements are approximate. Not to scale. No liability accepted. You must rely on your own inquiries and seek advice from your solicitor. Floor plan by cnkplan@cnkplan.com.au / www.cnkplan.com.au