



### Level 10/B1006/1 Link Road Zetland NSW

3  2  2 

Linfield Property Agents are proud to present this 3 bedroom skyhome with study in award-winning complex "Paragon", offering easy access to East Village shopping center, world-class Green Square Aquatic Centre and WOTSO workspace just downstairs.

#### Property Features:

- Oversized dual level skyhome 159sqm internal space
- Dual balcony with Sydney CBD view and north aspect
- Floor-to-ceiling windows and sliding doors create a heightened sense of space
- Gourmet gas kitchen, quality appliance, pantry and storage
- Three generous bedrooms with built-in wardrobe, master with walk-in wardrobe
- Two full bathroom plus guest toilet, internal laundry
- Study area, ducted air conditioning, intercom
- Onsite building manager, retail space, WOTSO workplace

**Price** : \$ 1,410,000

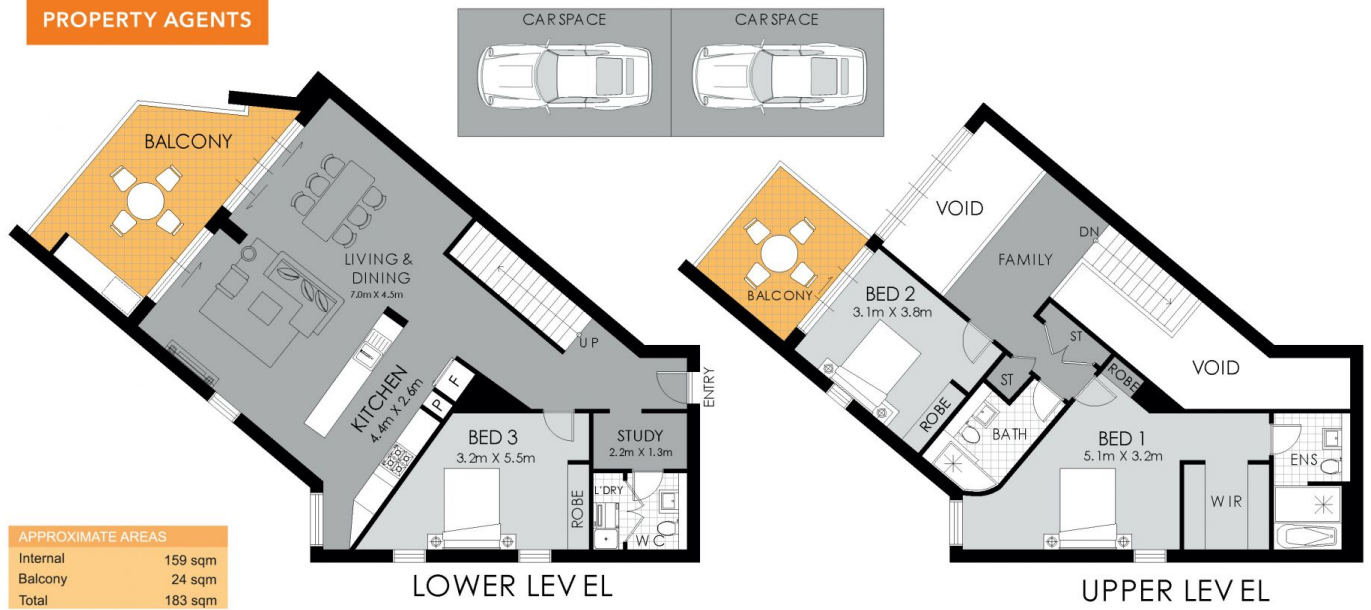
**View** : <https://www.linfieldgroup.com.au/sale/nsw/eastern-suburbs/zetland/residential/apartment/6420063>



**Shan Lin**  
02 8036 6999



**Zan (wenyu) Li**  
0426 766 868



**Zetland**  
B1006/1 Link Rd.

**WARNING: DISCLAIMER** This information is not to be relied upon. It is strictly used for marketing and illustration purposes only. All measurements are approximate. Not to scale. No liability accepted. You must rely on your own inquiries and seek advice from your solicitor. Floor plan by [cnkplan@cnkplan.com.au](mailto:cnkplan@cnkplan.com.au) / [www.cnkplan.com.au](http://www.cnkplan.com.au)