

Level 12/1209/3 Carlton Street Chippendale NSW

2  2  2 

Linfield Property Agents are proud to present this prestigious two bedroom apartment located on 12th floor of the Iconic One Central Park. With extensive north east facing city views and modern design finishes, this stunning apartment offers luxurious yet convenient lifestyle with abundance of amenities right at your doorstep.

Property Features:

- North East facing view captured through floor-to-ceiling windows
- Open plan living and dining areas flow to a sunny timber floor balcony
- Modern kitchen with stone benchtop, SMEG gas cooktop and quality appliances
- Two master bedrooms with ensuite and built-in wardrobes
- Ducted air-conditioning system, video intercom and internal

Price : Offers Invited

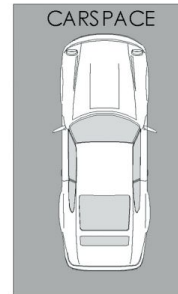
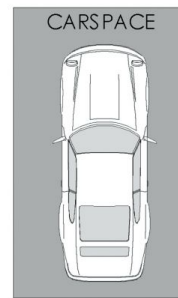
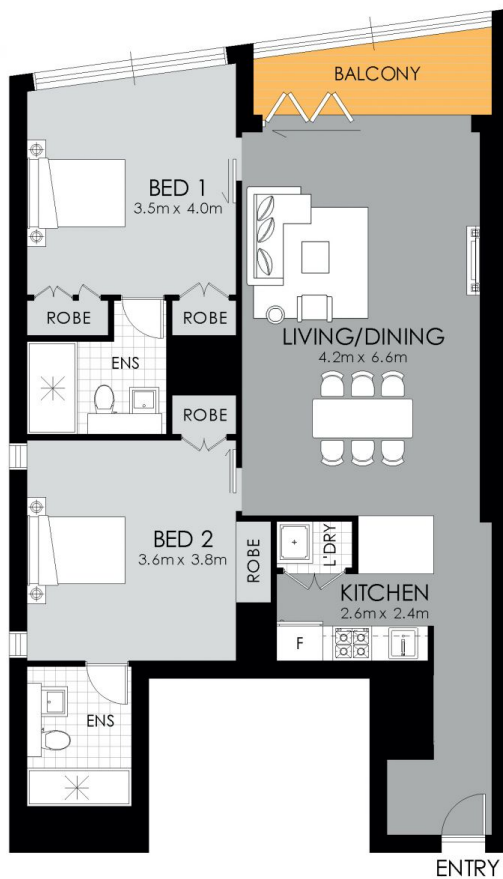
View : <https://www.linfieldgroup.com.au/sale/nsw/sydney-city/chippendale/residential/apartment/7464074>



Spencer (zijing) Zhang
02 8036 6999



Shan Lin
02 8036 6999



APPROXIMATE AREAS	
Internal	86 sqm
Balcony	6 sqm
Total	92 sqm
APPROXIMATE OUTGOING	
Strata	\$3,155.38 p/q
Council	\$302.90 p/q
Water	\$257.97 p/q

Chippendale
1209/3 Carlton St.

WARNING: DISCLAIMER This information is not to be relied upon. It is strictly used for marketing and illustration purposes only. All measurements are approximate. Not to scale. No liability accepted. You must rely on your own inquiries and seek advice from your solicitor. Floor plan by cnkplan@cnkplan.com.au/ www.cnkplan.com.au