



## Level 6/609/1 Mooltan Avenue Macquarie Park NSW

2  2  1 

Linfield Property Agents are proud to present this north east facing two bedroom apartment in "Melbourne Building" of Macquarie Park Village. Being architecturally designed by AJ+C Architects with high quality interiors throughout, the property offers generous two bedroom with L shape entertainer's balcony.

### Property Features:

- 2 Bed | 2 Bath | 1 Car
- North East aspect with natural light
- Open plan dining and living area leading to a sun drenched balcony
- Floor-to-ceiling windows and sliding doors create a heightened sense of space
- Gourmet gas kitchens are fitted with quality appliances
- Two generous sized bedrooms both with built-in wardrobes

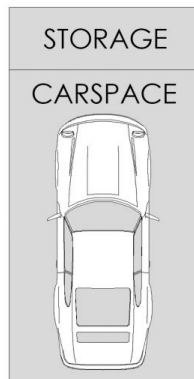
**View :** <https://www.linfieldgroup.com.au/sale/nsw/northern-suburbs/macquarie-park/residential/apartment/7933620>



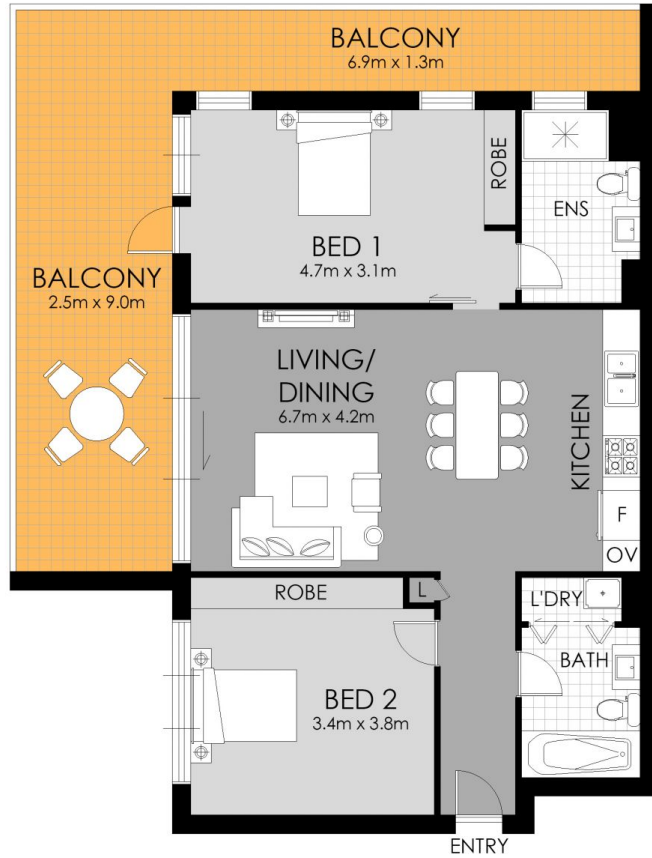
**Shan Lin**  
02 8036 6999



**Rita (ruolong) Huang**  
02 8036 6999



APPROXIMATE AREAS	
Internal	79 sqm
Balcony	32 sqm
Total	111 sqm
APPROXIMATE OUTGOING	
Strata	\$1292.65 pq
Council	\$344.37 pq
Water	\$171.41 pq



Macquarie Park  
609/1 Mooltan Ave.

**WARNING: DISCLAIMER** This information is not to be relied upon. It is strictly used for marketing and illustration purposes only. All measurements are approximate. Not to scale. No liability accepted. You must rely on your own inquiries and seek advice from your solicitor. Floor plan by [cnkplan@cnkplan.com.au](mailto:cnkplan@cnkplan.com.au) / [www.cnkplan.com.au](http://www.cnkplan.com.au)