



**21 Founders Avenue Leppington NSW**

4  2  1 

Well located in the sought-after Denham Court area, this two storey home built by Rawson Homes offers family living with practical layout and convenience lifestyle. With easy access to local shops and transport, this 4 bedroom family is tailored for growing family and astute investors.

**Price** : Auction Guide \$950,000

**View** : <https://www.linfieldgroup.com.au/sale/nsw/macarthurcamden/leppington/residential/house/7983450>

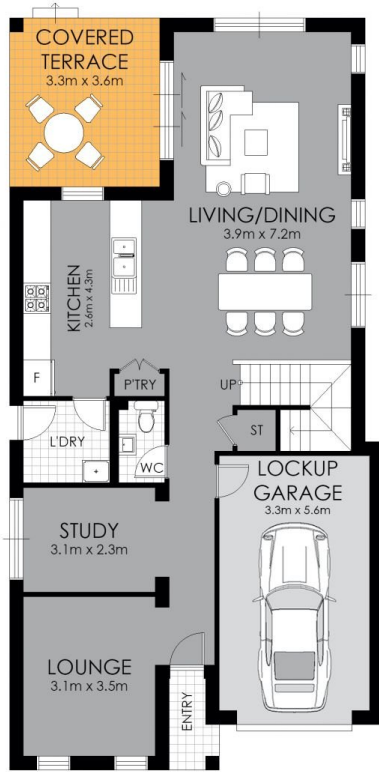
- 4 Bed + Study | 2.5 Bath | 1 LUG
- Fresh paint, brand new flooring throughout
- 4 generous bedroom with BIR, master with ensuite
- Quality kitchen with quality appliances, breakfast bar, gas cooking and pantry
- Spacious living and dining with north east aspect
- Outdoor alfresco flowing into easy maintenance backyard
- Study area, lounge, family area upstairs
- Air conditioning, laundry, single lock up garage with internal access
- Easy access to Leppington villages, schools, shops and



**Shan Lin**  
02 8036 6999

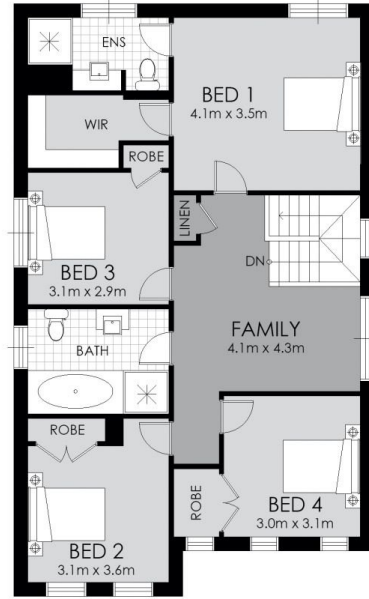


**Rita (ruolong) Huang**  
02 8036 6999

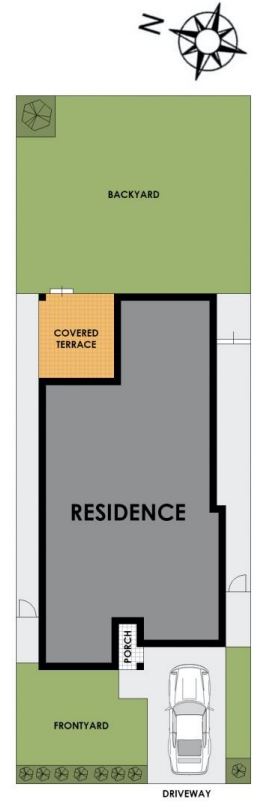


GROUND FLOOR

APPROXIMATE AREAS	
Internal	185 sqm
Balcony	12 sqm
Total	197 sqm



FIRST FLOOR



SITE PLAN

Leppington  
21 Founders Ave.

**WARNING: DISCLAIMER** This information is not to be relied upon. It is strictly used for marketing and illustration purposes only. All measurements are approximate. Not to scale. No liability accepted. You must rely on your own inquiries and seek advice from your solicitor. Floor plan by [cnkplan@cnkplan.com.au](mailto:cnkplan@cnkplan.com.au) / [www.cnkplan.com.au](http://www.cnkplan.com.au)