



D2014/55 Wilson Street Botany NSW

2  1  2 

Linfield Property Agents proudly present this oversized 2-bedroom apartment located in the prestigious "Tailor's Walk" precinct. Featuring a spacious 60sqm entertainer's courtyard with private access separate from the main entrance, this light-filled home offers the ultimate in modern living with convenience at your doorstep. Enjoy easy access to local cafes, shops, and parks, making this apartment the perfect place to call home.

Type : Apartment

View : <https://www.linfieldgroup.com.au/sale/nsw/easter-n-suburbs/botany/residential/apartment/8131200>

Property Features:

2 Bed | 1 Study | 1 Bath | 2 Car

Stylish gas kitchen with stainless steel appliances

Open-plan living and dining area flowing onto an entertainer's courtyard

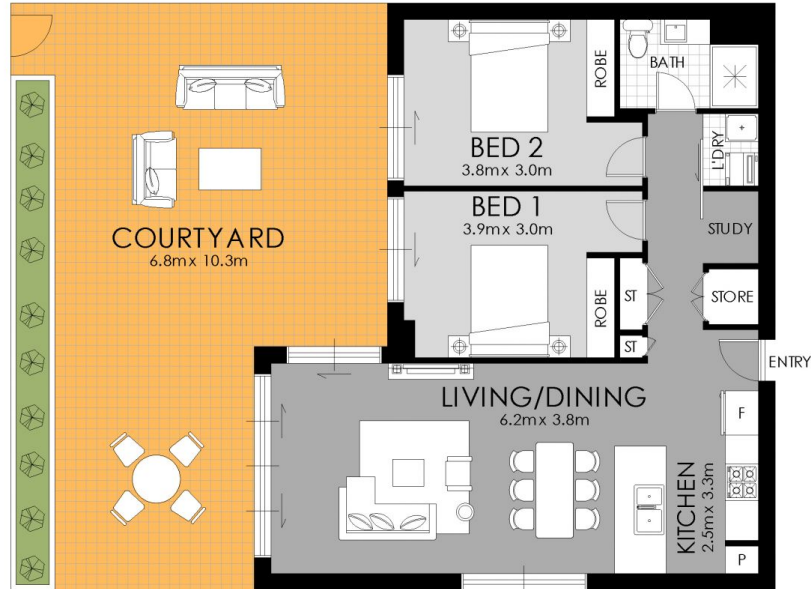
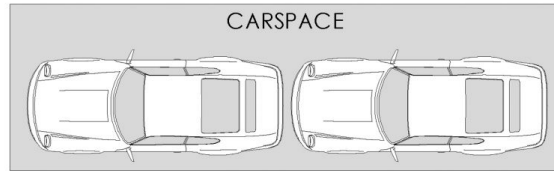


Shan Lin
02 8036 6999



Rita (ruolong) Huang
02 8036 6999

[For full version visit the website](https://www.linfieldgroup.com.au)



FLOOR PLAN

| APPROXIMATE AREAS | |
|----------------------|--------------|
| Internal | 73 sqm |
| Balcony | 61 sqm |
| Total | 134 sqm |
| APPROXIMATE OUTGOING | |
| Strata | \$1697.84 pq |
| Council | \$374.33 pq |
| Water | \$238.64 pq |

Botany
D2014/55 Wilson St.

WARNING: DISCLAIMER This information is not to be relied upon. It is strictly used for marketing and illustration purposes only. All measurements are approximate. Not to scale. No liability accepted. You must rely on your own inquiries and seek advice from your solicitor. Floor plan by cnkplan@cnkplan.com.au / www.cnkplan.com.au