




Level 4/24/545-553 Pacific Highway St Leonards NSW

2  **2**  **1** 

Entry via Oxley Street

Linfield Property Agents proudly present this spacious two-bedroom apartment, perfectly positioned in the heart of St Leonards. This full-brick apartment is set back from the main road, offering a peaceful retreat with the convenience of inner-city living. Located directly opposite the newly opened Crows Nest Metro station, this property provides unparalleled access to public transport, local shops, and cafes.

Features:

2 Bed | 2 Bath | 1 Car

Open dining and living area that flows seamlessly to a north-east facing balcony with abundant natural light

[For full version visit the website](https://www.linfieldgroup.com.au)

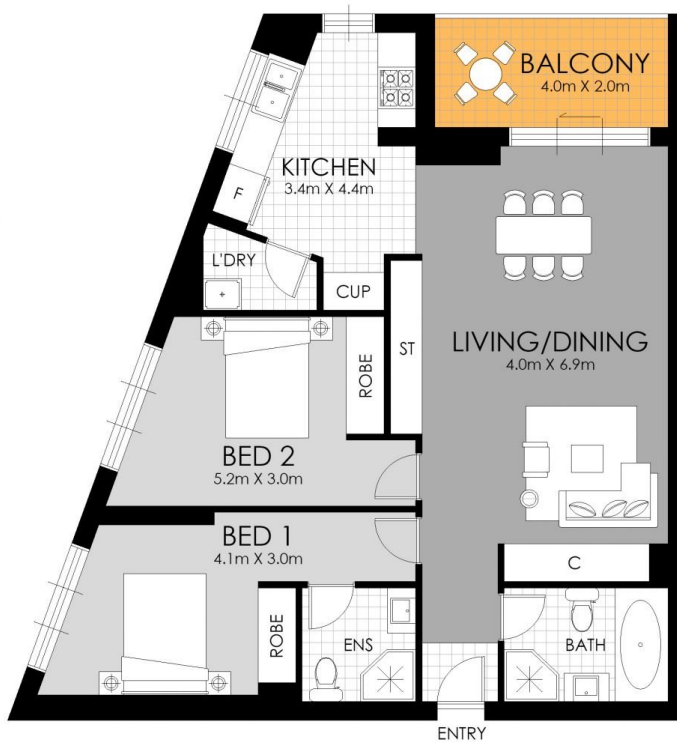
Type : Apartment
Price : Buyers Guide \$950,000
Building Size : 105 sqm
View : <https://www.linfieldgroup.com.au/sale/north-shore-lower/st-leonards/residential/apartment/8137405>



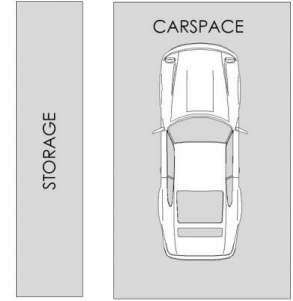
Shan Lin
02 8036 6999



Rita (ruolong) Huang
02 8036 6999



APPROXIMATE AREAS	
Internal	78 sqm
Balcony	7 sqm
Total	85 sqm
APPROXIMATE OUTGOING	
Strata	\$1366.20 pq
Council	\$319.00 pq
Water	\$159.90 pq



BASEMENT



FLOOR PLAN

St Leonards
24/545 Pacific Highway

WARNING: DISCLAIMER This information is not to be relied upon. It is strictly used for marketing and illustration purposes only. All measurements are approximate. Not to scale. No liability accepted. You must rely on your own inquiries and seek advice from your solicitor. Floor plan by [cnkplan@cnkplan.com.au/ www.cnkplan.com.au](http://cnkplan.com.au/)